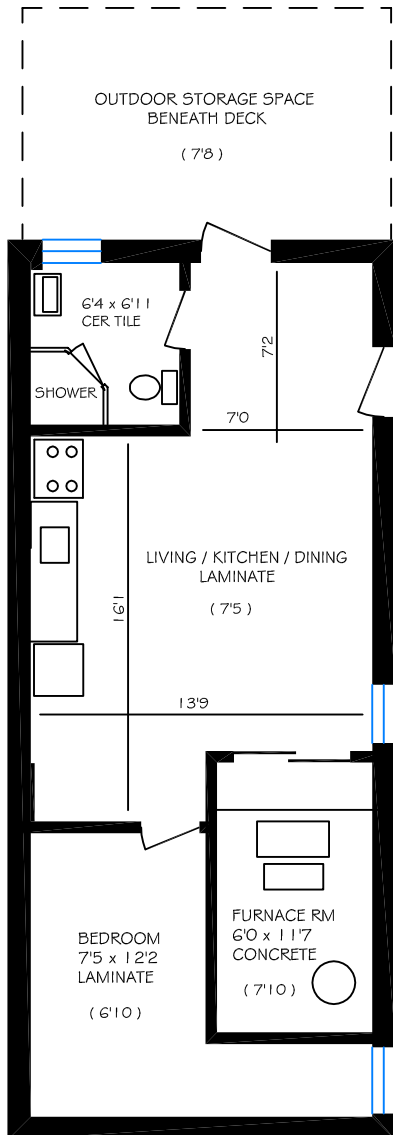


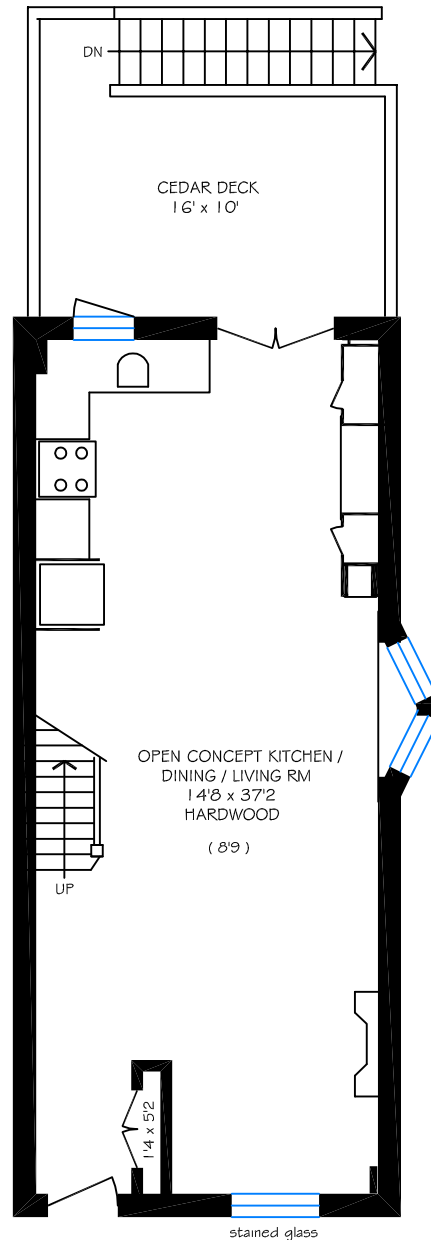
1045 Davenport Road

Total above ground floor area is 1610 sq ft

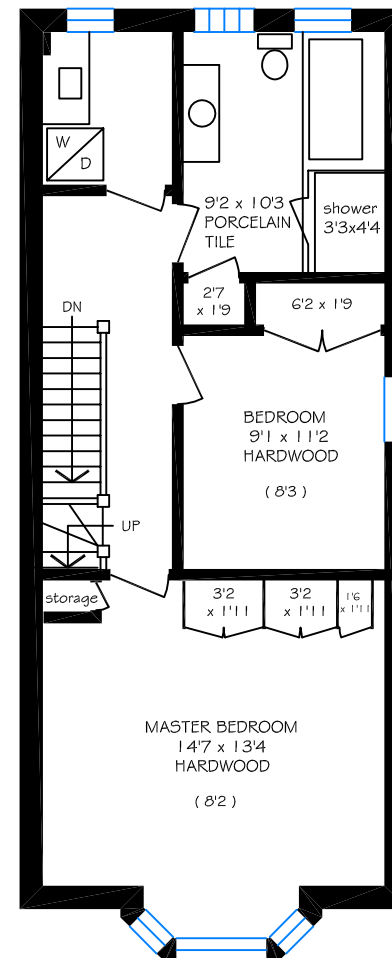
Kevin Alvarez, Sales Representative
Royal LePage Real Estate Services
Tel (416) 762-8255



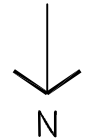
BASEMENT LEVEL = 650 SQ FT



GROUND FLOOR = 650 SQ FT



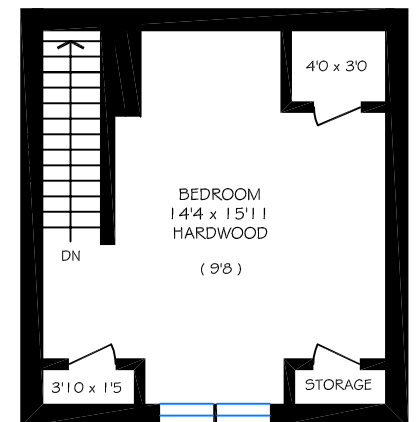
SECOND FLOOR = 660 SQ FT



Note : All hardwood flooring indicated
is Brazilian Jatoba.

No warranty is made or implied as to the
accuracy of the information contained herein.

(8'9) refers to ceiling height.



THIRD FLOOR = 300 SQ FT