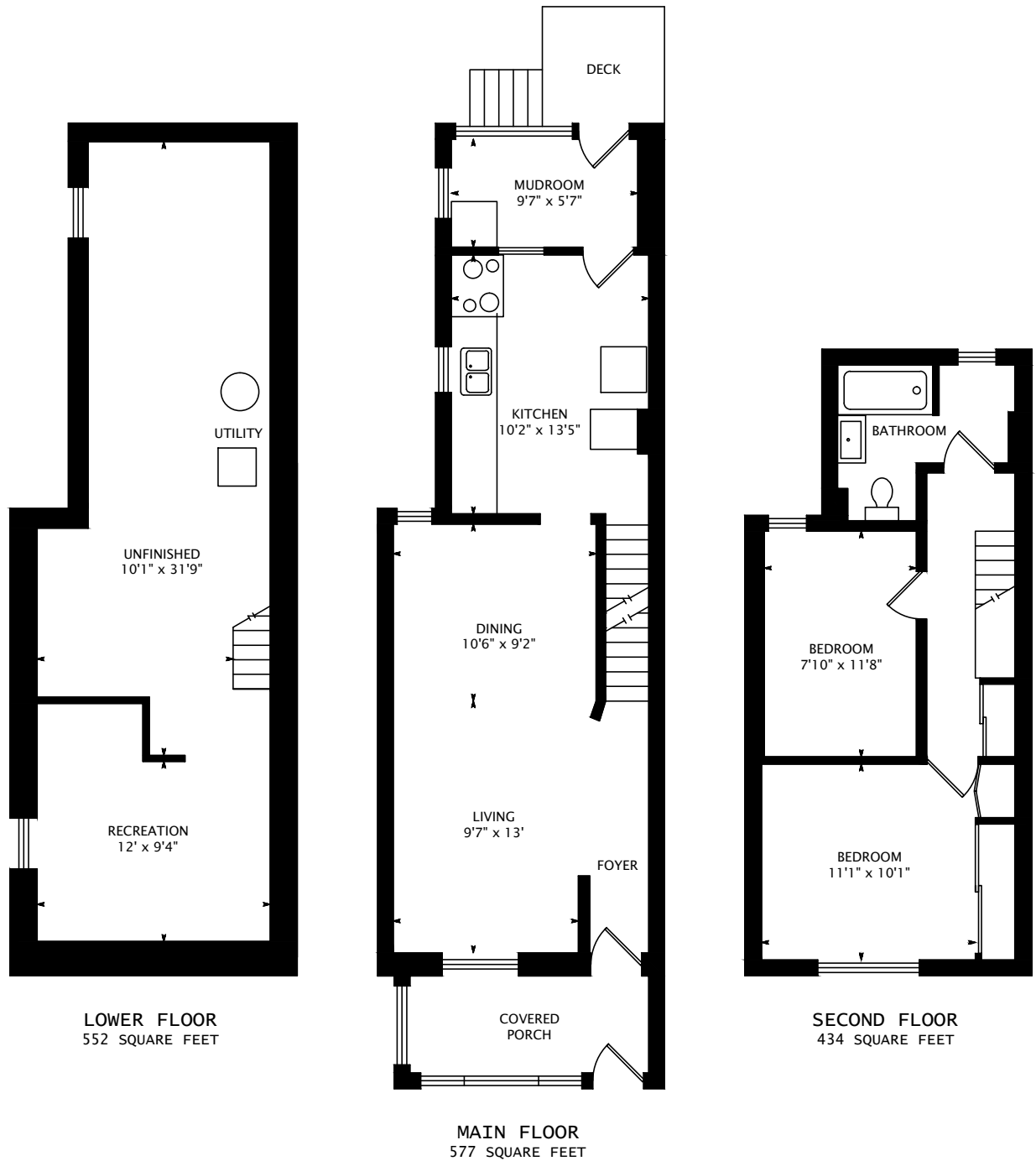


16 NORWOOD TERRACE



1011 SQUARE FEET
+ 552 SQUARE FEET BELOW GRADE

interactive tour: toursler.com/16-norwood



DATE: NOVEMBER 20, 2015

DIMENSIONS, AREAS, LAYOUTS AND DETAILS ARE APPROXIMATE AND SHOULD BE CONSIDERED ILLUSTRATIVE ONLY.

KEVIN ALVAREZ, SALES REPRESENTATIVE
ROYAL LEPAGE SIGNATURE REALTY, BROKERAGE
DIRECT: (416) 317-7754, OFFICE: (416) 205-0355
EMAIL: kevin@kevin Alvarez.ca, WEB: kevin Alvarez.ca